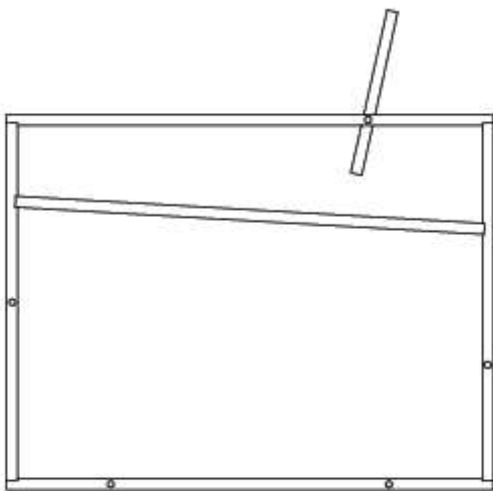


## Armchair\_01

From its first sketch to its execution, Armchair\_01 is designed as a simple, classic and sophisticated piece of furniture. Its ergonomic structure provides support of the lower back, alongside the use of strong and flexible four-millimeter thick leather which reacts to the human body and changes accordingly over time, making it one's own special chair.

PRICE: 6,900 NIS



### DIMENSIONS:

Width: 65 cm  
Length: 70 cm  
Height: 69 cm  
Seat Height: 43 cm

## MATERIALS:

Steel frame, leather/fabric

### FRAME



LACQUERED STEEL

### FRAME: FITTINGS



STEEL + FLAT  
BRASS



STEEL + HEX  
BLACK

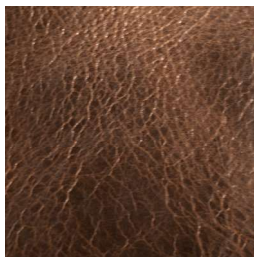


STEEL + HEX  
BRASS

### LEATHER



L\_1



L\_2



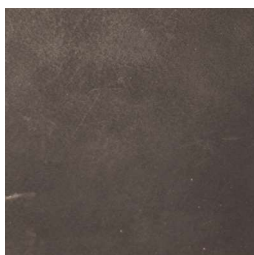
L\_3



L\_4



L\_5



L\_6



L\_7